

WiSound

3D

WiSound
Technology

BAR

With **Built-in Subwoofer**

USER MANUAL

Welcome

Congratulations on the purchase of your new 3D-Bar Sound System, an epitome of audio engineering excellence! Experience the future of home cinema with WiSOUND® 360° technology, designed to redefine Home Audio with 3-Dimensional Soundstage and Perfect Sound Anywhere.



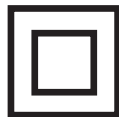
Contents

Welcome	2
General Safety Warnings	4
Packaging Contents	6
Quick Start Guide	7
Specifications	9
Soundbar Wall Mounting	14
Storage and Disposal	16
Input Functions	17
Troubleshooting	21

General Safety Warnings

Read this manual thoroughly before first use and keep it in a safe place for future reference. The safety precautions enclosed herein reduce the risk of fire, electric shock and injury when correctly adhered to.

This Product complies with Safety Standard EN 62368.1 to ensure the safety of the product.



CLASS II - DOUBLE INSULATED APPLIANCE

This symbol indicates that the device has been designed in such a way that it does not require a safety connection to electrical earth (ground).

IMPORTANT

Electrical safety and cord handling

- Protect from moisture: Do not expose this equipment, the power supply cord and plug to rain or moisture. Do not use it anywhere near water or where water splashes or drips, such as a bathroom or near a swimming pool. Do not touch the power plug with wet hands.
- Voltage: Before connecting this equipment to the mains power supply, make sure your outlet voltage corresponds to the voltage stated on the appliance rating label.
- Mains power connection: When connecting this equipment to the mains power supply, only use cord and plug supplied. Align the plug properly and insert it fully. Do not overload the power outlet.
- Damaged cord: When the power cord is damaged, it must be replaced by the manufacturer or similarly qualified personnel in order to avoid a hazard.
- Protect the power cord: Do not let the cord hang over the edge of a table or counter, or touch any hot surface. Do not allow anything to rest on or roll over the power cord. Run any cords so no one steps on or trips over them. Do not run the cord near heat-producing appliances such as radiators or stoves.

- Disconnect: Switch off and unplug the unit during lightning storms, and when it is not going to be used for a while. Grasp the plug, not the cord, when disconnecting.
- Disconnect device: This unit must be unplugged for complete disconnection from the mains power supply. Ensure the mains plug remains readily accessible for disconnection.

Usage conditions and restrictions

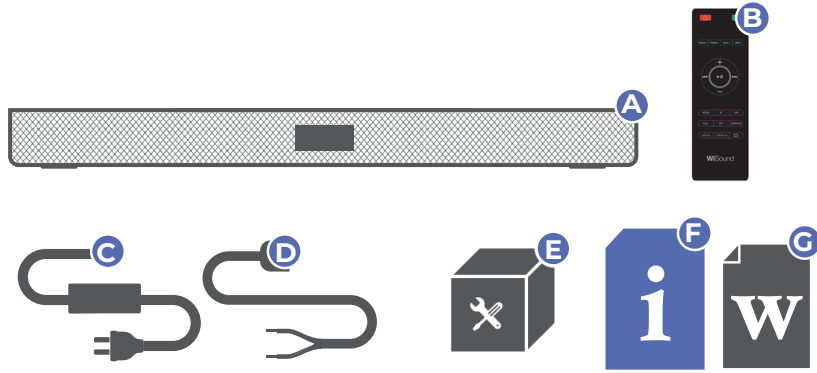
- Instructions: Follow the instructions in this manual when installing and adjusting this equipment. Only adjust those controls that are covered in this instruction manual, as improper adjustment of other controls may result in damage. If this happens, unplug the equipment and have it serviced by appropriately qualified personnel.
- Accessories: Only use attachments/accessories specified by the manufacturer or sold with the apparatus. Use of the speaker with accessories that are not recommended in this manual may cause injury or damage, and will void the warranty.

- Location: When using the equipment, make sure to place it:
 - In a well ventilated area, keeping a clearance of at least 20cm above and 5cm on each side of the unit to ensure proper ventilation.
 - Away from heat sources such as radiators, heat registers, stoves or other equipment (including amplifiers) that produce heat.
 - Away from areas with high temperatures, high humidity or direct sunlight.
 - Away from excess dirt and dust.
 - Away from strong magnetic fields.
- Usage restriction: The equipment is not intended for use by persons (including children) with reduced physical, sensory or mental capabilities, or lack of experience and knowledge, unless they have been given supervision or instruction concerning use of the appliance by a person responsible for their safety.
- Children: Supervise young children to ensure they do not play with the equipment. Close supervision is always necessary when an appliance is used by or near children.
- Protect the equipment: Prevent metal objects falling onto the equipment. Do not place heavy objects on top of the equipment or step on it. Do not place objects filled with water (such as vases), or naked flame sources (such as candles), on or near the equipment. If liquid or metal parts enter the system, unplug the power cable immediately and call our After Sales Support centre to arrange a service before further use.
- Ventilation: Openings on the cabinet are provided for ventilation and to protect the unit from overheating. To ensure proper operation, do not cover them with things such as newspapers, tablecloths, curtains etc.
- Transporting: Unpack the appliance and keep the original packaging carton and materials in a safe place. It will help prevent any damage if the product needs to be transported in the future, and you can use it to store the appliance when it is not in use.
- Storage: When the speaker is not in use, disconnect it from the power source and store in a cool, dry and well ventilated location out of direct sunlight. Ensure that it is not subject to humidity.
- Cleaning: Unplug the equipment from the power outlet before cleaning. Clean the equipment only with a clean, dry or slightly damp cloth. Do not use liquid or aerosol cleaners or volatile solvents.
- Service: Refer all servicing to qualified personnel. Servicing is required when the apparatus has been damaged in any way, such as when the power supply cord or plug is damaged, liquid has been spilled or objects have fallen into the unit, it has been exposed to rain or moisture, does not operate normally, or has been dropped.
- Repair: If the unit requires repair, contact the After Sales Support line; never disassemble or modify the unit or attempt to service it yourself.
- Liability: We accept no liability for any damage caused by non-compliance with these instructions or mishandling of the equipment.

Warning:

- Do not disposal of a battery into fire or a hot oven, or mechanically crushing or cutting of a battery, that can result in an explosion.
- Do not leaving a battery in an extremely high temperature surrounding environment that can result in an explosion or the leakage of flammable liquid or gas.
- Do not expose the battery to extremely low air pressure that may result in an explosion or the leakage of flammable liquid or gas.
- The power supply cord is used as the disconnect device, for pluggable equipment, the socket-outlet shall be easily accessible.

Packaging Contents



- A. Soundbar:** Engineered for superior audio clarity and depth.
- B. Remote Control:** Seamless control over your audio experience.
- C. Power Cable:** Reliable electricity supply to ensure optimal performance.
- D. AUX Cable:** Versatile connectivity for various audio setups.
- E. Wall Mount Kit:** 4pcs of 4*30mm screws included.
- F. User Manual:** Instructions for setup, use, and troubleshooting.
- G. Warranty Card:** Details the warranty terms and conditions for your equipment.

***Remote Control Battery: 2 x AAA Batteries (not included)**

Quick Start Guide

1. Unpack Your System:

- Remove the soundbar and from the box.

2. Place Your Devices:

- Position the soundbar near your TV in a suitable location for optimal performance.

3. Establish Connections:

- **HDMI (eARC):** Connect the soundbar to your TV's HDMI eARC port with an HDMI cable for high-quality audio and video synchronization. (Cable not included)
- **Optical:** Use this for TVs without HDMI ARC. Connect using an optical cable (not included) for digital audio.
- **USB:** Supports playback of MP3 and WAV files from USB drives up to 64GB (FAT32 format), and charges devices.
- **AUX:** Use a 3.5mm cable (included) to connect the soundbar to headphone jacks on mobile devices or computers.
- **Bluetooth:** Enables wireless streaming from smartphones, tablets, or computers. Activate pairing mode if necessary.

4. Power Up:

- Plug in the power cable for the soundbar.

5. Turn On Your TV:

- Power on your TV and select the HDMI input to which the soundbar is connected.

6. Check TV's Sound Settings (The procedure may vary by model):

- Navigate to: Settings > Sound > Advanced Settings > Audio Format. Change all settings to Stereo or PCM.
- Wherever Dolby is mentioned, switch it to Stereo or PCM.
- Power off the TV and soundbar for about 10 seconds, then power them back on.
- Verify that the new settings have been successfully applied.

7. Adjust Audio Settings:

- Configure your TV's audio settings to output sound through the HDMI (eARC) connection.

8. Enjoy Your System:

- Play audio to test the setup and adjust the volume as needed.

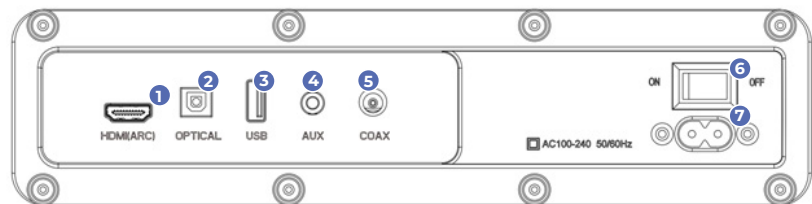
Specifications

Maximum Total Speaker Power Output	300W		
Speaker Drivers	Soundbar	2.25"/15WRMS full-range drivers x 6 (front/side)	
	Built-in Subwoofer	3"/30WRMS x 2	
Power Supply	Soundbar	INPUT	100-240V~, 50/60Hz, 120W
		USB OUTPUT	5V = 0.5A
Dimensions	Soundbar	1012 x 125 x 75 mm	
Net Weight	4.3kg		
Bluetooth Pairing Name	WiSOUND 3D-BAR		

Bluetooth®

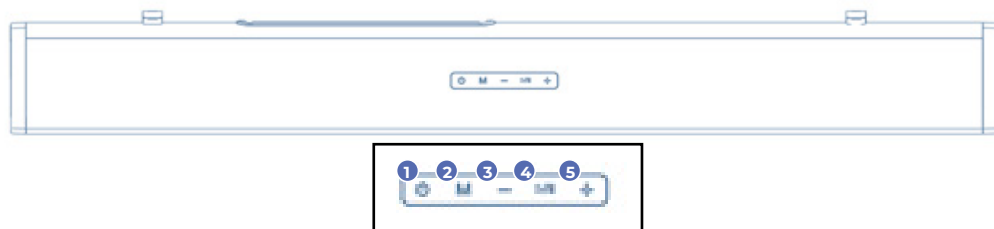
The Bluetooth® word mark and logos are registered trademarks owned by Bluetooth SIG, Inc., and any use of such marks by Hands (IP) Holdings Pty Ltd is under license. Other trademarks and trade names are those of their respective owners.

Soundbar Connections



- 1. HDMI (ARC):** For high-definition audio return channel connections. Cable not included.
- 2. USB IN:** Supports direct MP3/WAV playback from flash drives (up to 64GB, FAT32 format). Cable not included.
- 3. AUX IN:** For audio input via 3.5mm stereo jack cable. Cable provided.
- 4. Coaxial IN:** For digital audio input using a coaxial cable. Cable not included.
- 5. Optical IN:** For digital audio input using an optical cable. Cable not included.
- 6. POWER ON/OFF:** Main power switch.
- 7. AC IN:** For connecting the power cable. Cable provided.

Soundbar Controls



- 1. Power On/Off:** Turn the soundbar on or off.
- 2. Mode (M):** Switch input modes.
- 3. Volume Down (-):** Decrease volume / Previous track.
- 4. Play/Pause:** Play or pause media.
- 5. Volume Up (+):** Increase volume / Next track.

LED Display

- 1. ARC:** HDMI (ARC) Mode
- 2. BT:** Bluetooth Mode
- 3. USB:** USB Media Mode
- 4. AUX:** Auxiliary Input Mode
- 5. OPT:** Optical Mode
- 6. COA:** Coaxial Mode
- 7. RED LED:** Standby Mode
- 8. BA-6:** Adjust the Bass (BA) Level Range from -6 to +6dB
- 9. TR 3:** Adjust the Treble (TR) Level Range from -3 to +3dB

Remote Control



Button	Function
	Turn the soundbar on/off.
	Mute or restore the volume.
TREBLE+	Increase treble level.
TREBLE-	Decrease treble level.
BASS+	Increase bass level.
BASS-	Decrease bass level.
VOL+	Increase volume.
VOL-	Decrease volume.
	Play the previous track.
	Play or pause media.
	Play the next track.
MODE	Switch between BT / USB / AUX / OPT / HDMI (ARC) modes.
BT	Switch to Bluetooth mode. Hold to enter pairing mode.
USB	Switch to USB mode.
AUX	Switch to AUX mode.
OPT	Switch to Optical mode.
HDMI ARC	Switch to HDMI (ARC) mode.
BASS 0	Reset Bass to default level (0dB).
TREBLE 0	Reset Treble to default level (0dB).
	Set USB repeat mode.

Wall Mounting

Mount the soundbar to the wall using the provided screws and wall hangers. Follow the installation steps outlined below. 4 pcs of 4*30mm screws included.

1. Measure & Mark

- Use a measuring tape to mark the mounting points (716.5mm / 28.2 inches apart).
- Ensure the markings are level for proper alignment.

2. Drill Holes

- Drill holes at the marked points according to the required size.

3. Insert Anchors

- If mounting on drywall or concrete, insert wall anchors for a secure hold.

4. Attach the Mounting Bracket

- Align the bracket with the drilled holes and secure it using screws.

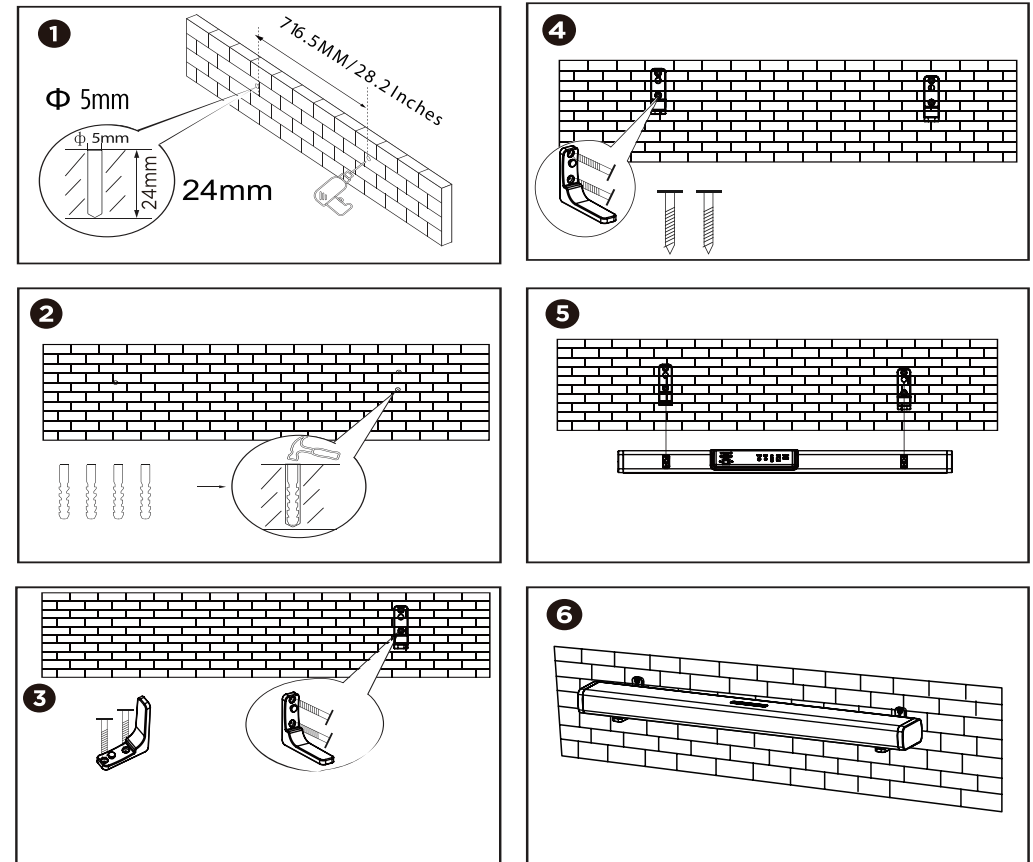
5. Fix the Soundbar

- Attached the Soundbar to the mounted bracket securely.
- Ensure it is properly aligned and tightened.

6. Check Everything

- Confirm stability by gently testing the bar.
- Adjust if necessary to ensure a firm installation.

Wall Mounting



Storage and Disposal

If you do not plan to use the product for an extended period of time, it is recommended that it is turned off, unplugged from supply and stored (preferably in its original packaging) in a cool, dry place.



Do not dispose of electrical products with household waste. Please check with your local council for advice on disposing or recycling. If electrical appliances are disposed of in landfills and dumps, hazardous substances can leak into the groundwater and get into the food chain, damaging your health and well-being.

Do not put your used batteries, nickel metal hydride, rechargeable, round cell or starter batteries with your household rubbish. Take them to an appropriate disposal/collection site.

Input Functions

- **Power on/off:** Press the Power on/off button on the remote control or soundbar control panel to turn the soundbar on and off.

Note: The display automatically turns off after 3 minutes of inactivity.

- **HDMI (eARC):**
 1. Connect a HDMI ARC compatible device TV to the HDMI(ARC) port on the soundbar using a HDMI cable (not provided).
 2. Select ARC mode either by pressing the MODE button on your remote control or repeatedly pressing the MODE button on the sound bar control panel until ARC is displayed on the LED display.
 3. Ensure HDMI ARC is selected as the TV's audio output, then adjust the volume of sound bar using the Volume up and Volume down buttons on the remote control or sound bar control panel.

- **AUX in:**

1. Connect a compatible device using the 3.5mm – RCA stereo jack cable.
2. Select AUX mode by pressing the MODE button on your remote control or repeatedly pressing the MODE button on the soundbar control panel until AUX is displayed on the LED display.
3. Ensure the connected device is producing an audio signal, then adjust the volume of soundbar using the Volume up and Volume down buttons on the remote control or soundbar control panel.

- **Optical in:**

1. Connect a compatible device to the OPTICAL input on the soundbar using a digital optical cable (not supplied).
2. Select OPT mode by pressing the MODE button on the soundbar control panel until OPT is displayed on the LED display.
3. Ensure Optical SPDIF is selected as the TV's audio output, then adjust the volume of the soundbar by pressing the Volume up and Volume down buttons on the remote control or soundbar control panel.

- **Coaxial mode:**

1. Connect a compatible device to the Coaxial input on the soundbar by using coaxial cable (not supplied).
2. Select coaxial mode by pressing the MODE button on remote control or on the soundbar control panel until COA is displayed on the LED display.
3. Ensure Coaxial selected as the TV's audio output, and then adjust the volume of the soundbar by pressing the Volume up and Volume down buttons on the remote control or soundbar control panel.

- **Bluetooth:**

1. Press the BT button on the remote control or repeatedly pressing the MODE button on the soundbar control panel until BT is shown on the LED display.
2. The LED display will flash to indicate that the soundbar is in Bluetooth pairing mode. Ensure that the device you wish to connect is also in pairing mode and search for "WiSOUND 3D-BAR" in Bluetooth device list.
3. The LED display on the soundbar will stop flashing and remain constantly when the two devices are paired. (The soundbar will now automatically re-pair with this device when it is within distance range and in Bluetooth mode.)

- **USB media mode:**

The soundbar is compatible with USB flash memory up to 64GB (Fat32 format) and support MP3 and WAV audio files directly.

1. Insert a compatible USB flash driver into the USB port on the back of the soundbar and the unit will automatically switch to USB mode and play the first compatible track.
2. USB repeat mode (also accessed via the remote control) enables single track repeat (ONE), all track repeat (ALL).
3. The media player also has memory function that will recall and continue from the last-played point when a USB flash driver has been used with the soundbar is reinserted.

Troubleshooting

Sound Issues

- **No Sound from Multichannel Sources (Netflix, Dolby, DTS, etc.):**

- Check TV's Sound Settings (The procedure may vary by model)
- Navigate to: Settings > Sound > Advanced Settings > Audio Format. Change all settings to Stereo or PCM.
- Wherever Dolby is mentioned, switch it to Stereo or PCM.
- Power off the TV and soundbar for about 10 seconds, then power them back on.
- Verify that the new settings have been successfully applied.

- **Low Volume:**

- Check that the soundbar and TV or other connected devices are set to an appropriate volume level.
- Ensure that audio settings on the soundbar are correctly adjusted for room size and acoustics.

- **No sound from the Soundbar's Speakers:**
 - Ensure the audio cable is connected properly from your Soundbar to your TV or other devices. Note: A separate audio connection is not needed if the Soundbar and TV are connected via HDMI ARC.
 - Check and adjust the audio input using the remote control to match the connected device.
- **Distorted sound or echo:**
 - If sound is played from the TV through the Soundbar, verify that the TV's volume is muted to avoid feedback or echo.

Connectivity Issues

- **Soundbar Not Recognizing HDMI Input:**
 - Verify that the HDMI cable is properly connected and is in good condition. Try a different HDMI cable to rule out cable issues.
 - Check if the HDMI input selected on the soundbar matches the one used on the TV or device.
- **Remote Control Not Working:**
 - Replace the batteries in the remote control.
 - Ensure there are no obstacles between the remote control and the soundbar's IR sensor.

- **Power Supply and Circuit Issues:**
 - Ensure the soundbar is connected to a reliable power source. If using a power strip, try connecting directly to a wall outlet to rule out power strip issues.
 - Check the condition of the power cables and replace them if they show any signs of damage or wear.

Bluetooth Issues

- **Device Cannot Connect with the Soundbar:**
 - Restart the Soundbar and attempt to pair again.
 - Ensure the Bluetooth function is enabled on the device. Refer to the device's user manual for instructions on enabling Bluetooth.
 - Check that the device is correctly connected.
 - If the Soundbar is already connected to another Bluetooth device, disconnect the other device and try pairing again.
- **Poor Audio Quality from Connected Bluetooth Device:**
 - Improve Bluetooth reception by moving the device closer to the Soundbar or removing any obstacles between the device and the Soundbar.
- **Bluetooth Device Connects and Disconnects Constantly:**
 - Improve Bluetooth reception by moving the device closer to the Soundbar or removing any obstacles that may interfere with the connection.

Additional Tips

- **System Resets:**
 - If persistent problems occur, perform a system reset.
 - Unplug the soundbar and subwoofer from power for at least 60 seconds, then reconnect and test.

WiSound